

## Pelagic Fish - Richness of Target Species

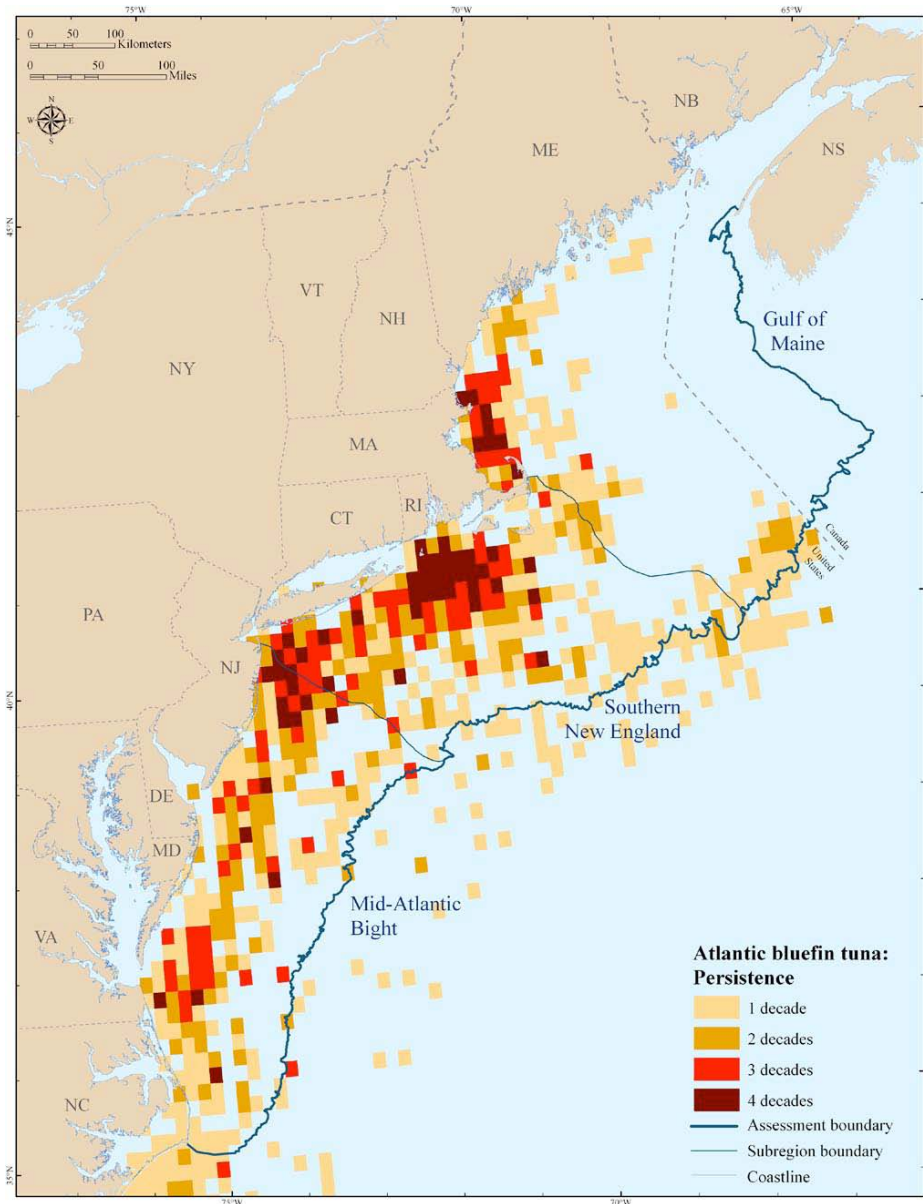
**Species:** Atlantic bluefin tuna, Albacore tuna, bigeye thresher, blue marlin, dusky shark, great hammerhead, porbeagle, sand tiger, Sandbar shark, Scalloped hammerhead, shortfin mako, swordfish, thresher shark, white marlin

**Data Source(s):** TNC, compiled from the National Marine Fisheries Service 2006 Final Consolidated Atlantic Highly Migratory Species Fishery Management Plan, pg. 10-3

**Scale:** Ten minute squares

**Year(s):** 1965 - 2004

**Product Details:** The number of target species observed within a TMS was summed and mapped based on all available data provided from the National Marine Fisheries Service. Maps were then created for the total number of targets and by age class. The darkest colors on the map indicate the areas with greater number of target species or target species within an age class.



## Pelagic Fish - Persistence

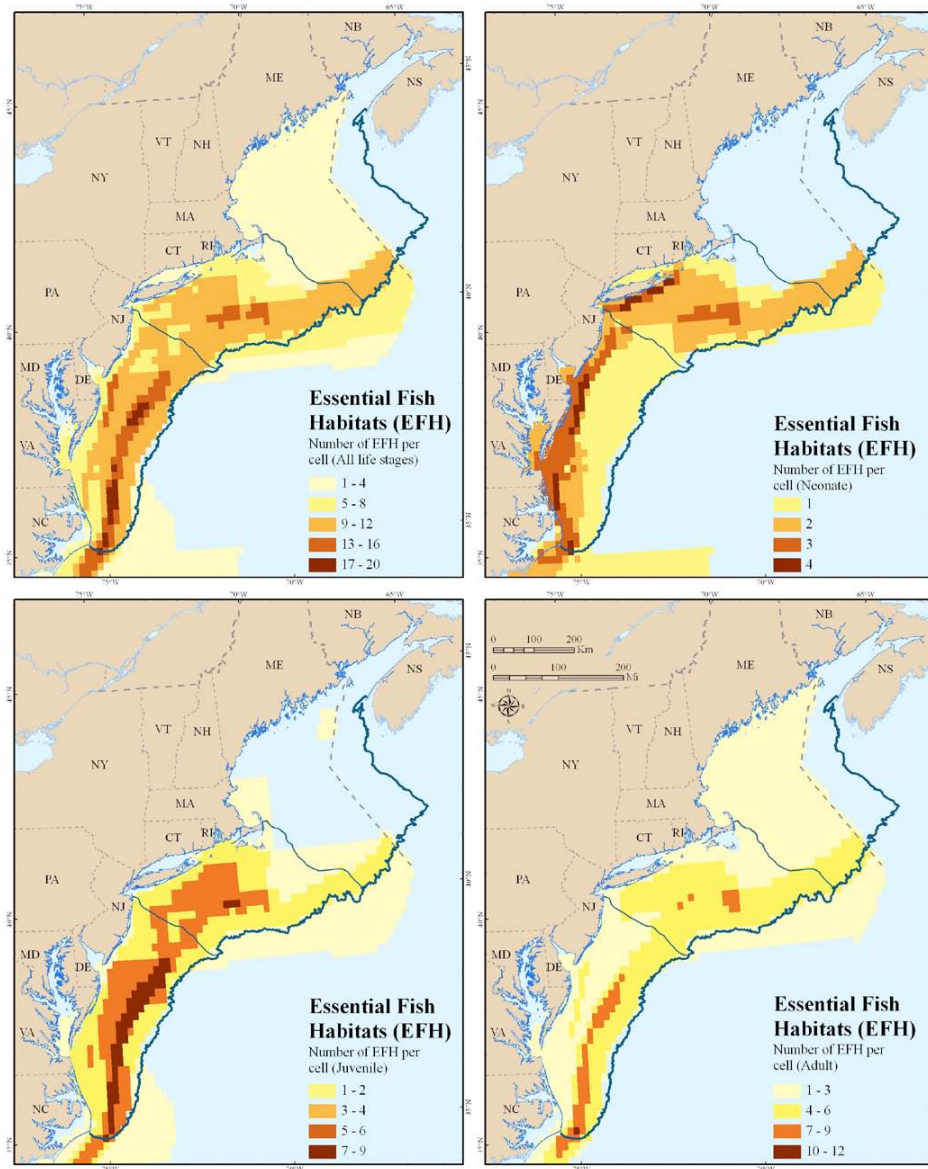
**Species:** Albacore tuna, Atlantic bluefin tuna, bigeye thresher, blue marlin, dusky shark, great hammerhead, porbeagle, sand tiger, sandbar shark, scalloped hammerhead, shortfin mako, swordfish, thresher shark, white marlin,

**Data Source(s):** TNC, compiled from the National Marine Fisheries Service 2006 Final Consolidated Atlantic Highly Migratory Species Fishery Management Plan, pg. 10-3

**Scale:** Ten minute squares

**Year(s):** 1965 - 2004

**Product Details:** The persistence score refers to the consistency with which a target species was observed in the same TMS over time. For this calculation, we combined juvenile and adult observations as an indicator that the species was present. The persistence score was calculated by summing the number of decades that a give target species was recorded (e.g. one decade = 1, four decades = 4). The darkest colors indicate areas where target species were consistently observed over all decades.



## Pelagic Fish - Essential Fish Habitat

**Species:** Albacore tuna, Atlantic bluefin tuna, bigeye thresher, blue marlin, dusky shark, great hammerhead, porbeagle, sand tiger, sandbar shark, scalloped hammerhead, shortfin mako, swordfish, thresher shark, white marlin

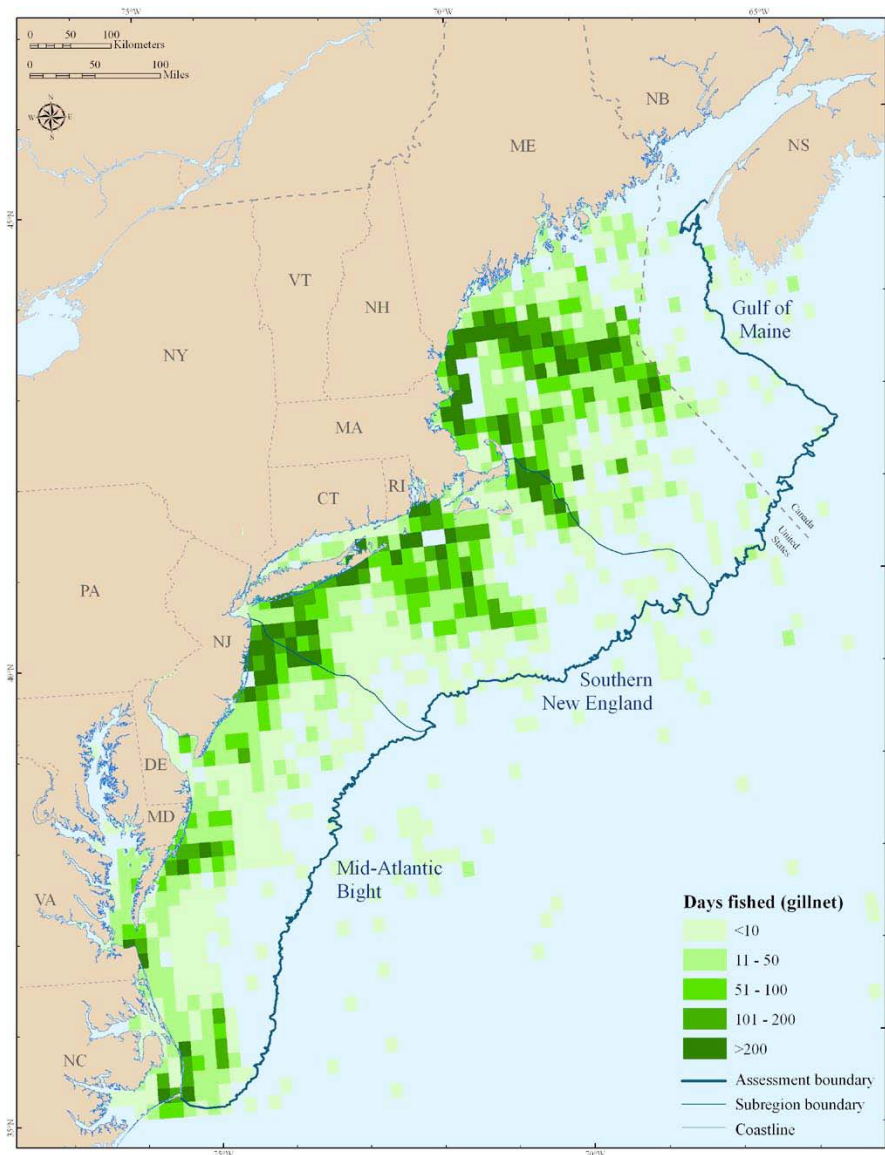
**Data Source(s):** TNC, compiled from NOAA's Office of Habitat Conservation, Habitat Protection Division Essential Fish Habitat polygons

**Scale:** Ten minute squares

**Year(s):** 1999

**Product Details:** Essential Fish Habitat (EFH) polygons were obtained from the NMFS website, except for the sandbar shark habitat which was provided by HMS upon request. The EFH polygons were compiled and mapped for the 1999 HMS FMP. EFH polygons were available for juvenile and adult life states for all target species, with the exception of the sand tiger (adult only). Neonate polygons were only available for dusky shark, porbeagle, sand tiger, sandbar shark, shortfin mako, swordfish (larvae), and thresher. The EFH were then summarized by TMS for all of the life stages. The darkest TMS indicate the cells with the largest number of EFHs.





## Pelagic Fish - Days Fished

**Data Source(s):** TNC, compiled from NOAA's Fishing Vessel Trip Reports

**Scale:** Ten minute squares

**Year(s):** 2001 - 2006

**Product Details:** The data were compiled from the Fishing Vessel Trip Reports provided by NOAA. Days fished for gillnet, longline, and bottom longline gear types were calculated by TMS. The darkest colors indicate areas with over 200 days fished.